

DELIVERY UNITS MDX

Delivery unit for air gases

Technical Features

- Designed for transportation of liquid nitrogen, oxygen and argon.
- Volume capacity of 450, 800 and 996 liters.
- All stainless steel construction and inner support system for durability and long life.
- Super-insulation provides long holding time and low nominal evaporation rate.
- Design and production in accordance with the European codes, standards and regulation for transportation of hazardous goods.
- Long life and low maintenance cost.

Options and Accessories

- Additional fill / liquid withdrawal valves.
- Connections according to customer's requirements.
- Additional vent valve.
- Low pressure relief line.
- Gauge isolation valves.
- Stainless steel bottom frame for forklift.
- Ball valves instead of globe valves.



The perfect solution the for home care application



Innovation. Experience. Performance. .

Chart Ferox, a.s., a Chart Industries Company

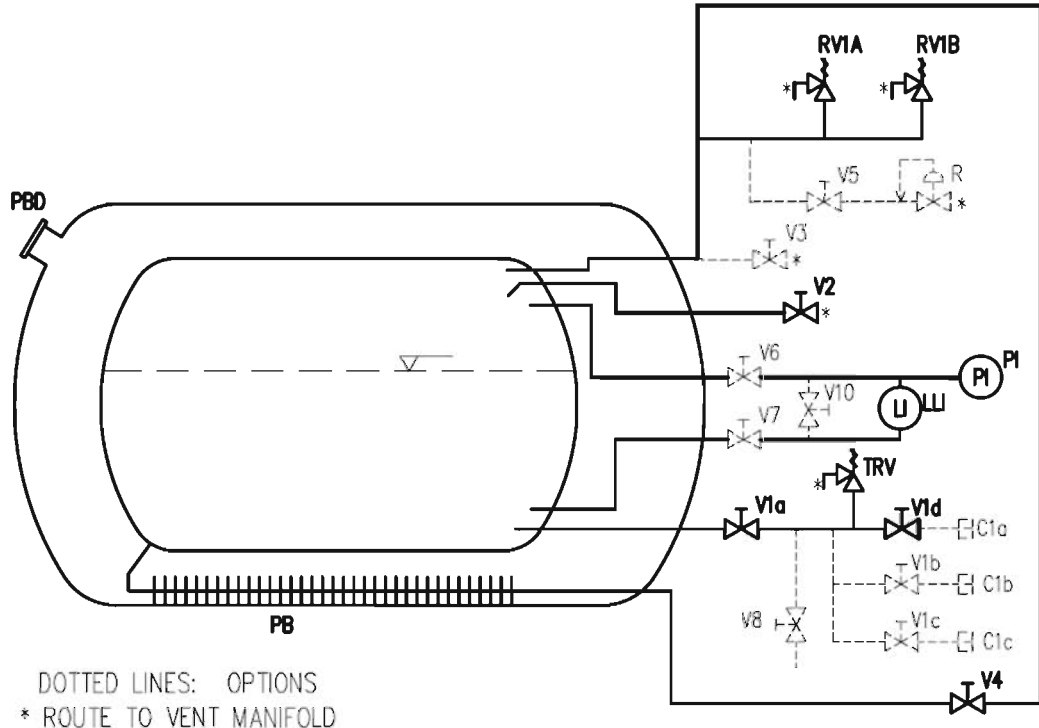
Chart Ferox, a.s. • Ústecká 30 • CZ-405 30 Děčín • Czech Republic • ph/ +420-412-507 343 • fx/ +420-412-507 297
Chart Ferox GmbH • Brosshauser Straße 20 • D-42697 Solingen • Germany • ph/ +49-(0)212-2 33 67-0 • fx/ +49-(0)212-2 33 67-10
Email: ferox-sales@chart-ld.com • Internet: <http://www.chart-ferox.com>
02070077E-0411 © 2009, Chart Ferox, a.s., a Chart Industries Company, All Rights Reserved

DELIVERY UNITS MDX

Delivery unit for air gases

Specifications

Flow Schematic



DOTTED LINES: OPTIONS
* ROUTE TO VENT MANIFOLD

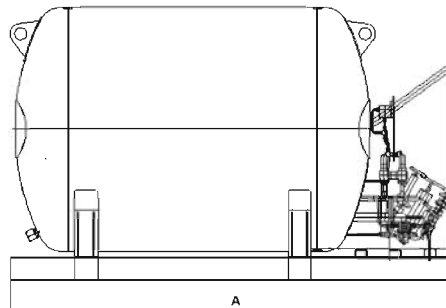
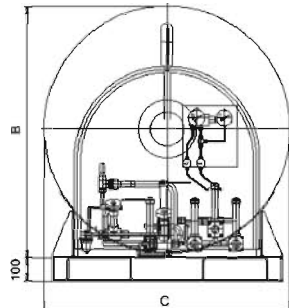
- LL1** Liquid Level Gauge
- PI** Pressure Gauge
- RV1A & RV1B** Safety Relief Valves
- R** Low Pressure Line Regulator (Option)
- V1a, d** Bottom Fill / Liquid Withdrawal
- V1b, c** Additional Bottom Fill / Liquid Withdrawal(Options)
- V2** Vent / Trycock Valve
- V3** Additional Vent Valve (Option)

- V4** Pressure Building Valve
- V5** Low Pressure Line Isolation Valve (Option)
- V6 & V7** Gauge Isolation Valves (Option)
- V8** Fill Line Drain Valve (Option)
- PBD** Vacuum Port / Safety Disc
- PB** Pressure Building Coil
- C1a, C1b, C1c** Connections (Options)
- TRV** Fill Line Thermal Relief Valve

Technical Parameters

Type	Gross	MAWP*	A-Unit Length	B-Unit Height	C-Unit Width	Tare Weight	Payload (kg)		
	Volume (l)	(bar)	(mm)	(mm)	(mm)		LIN	LOX	LAR
DU 450 L/8	450	8	1920	837	813	320	349	493	600
DU 800 L/8	800	8	1940	1094	1068	420	617	872	1065
DU 1000 L/8	996	8	2212	1094	1068	470	716	1085	1335
DU 1000 L/15	996	15	2207	1194	1068	710	767	1083	1333

* MAWP = Max. allowable working pressure



Innovation. Experience. Performance.

Chart Ferox, a.s., a Chart Industries Company

Chart Ferox, a.s. • Ústecká 30 • CZ-405 30 Děčín • Czech Republic • ph/ +420-412-507 343 • fx/ +420-412-507 297
 Chart Ferox GmbH • Brosshauser Straße 20 • D-42697 Solingen • Germany • ph/ +49-(0)212-2 33 67-0 • fx/ +49-(0)212-2 33 67-10
 Email: ferox-sales@chart-ld.com • Internet: <http://www.chart-ferox.com>
 02070077E-0411 © 2009, Chart Ferox, a.s., a Chart Industries Company, All Rights Reserved